

Component Replacement - electrical -



Xperia E4 : E2104, E2105

Xperia E4 Dual : E2115, E2124



CONTENTS

1 Replaceable Components 3

2 Component Placing..... 5

3 Additional Repair info 7

4 Revision History 12

For general information about electrical repair related issues, refer to 1220-1336: Generic Repair Manual - electrical

Test after electrical replacement: refer to 1273-1772 Mechanical Test Instruction

Do not remove shield can lids (Heat pasta are added and RF performance will be damaged)

1 Replaceable Components

EXPLANATION OF ABBREVIATIONS USED IN THE COLUMN 'COMMENTS' BELOW

COMPONENT LOCATION

P = Primary side

S = Secondary side

REPAIR METHOD

HA = Hot Air (removal & mounting)

ST = Soldering Tool (removal & mounting)

HA/ST = Hot Air for removal - Soldering Tool for mounting

BGA = BGA Station

BH = Bottom Heater

ADDITIONAL INFORMATION

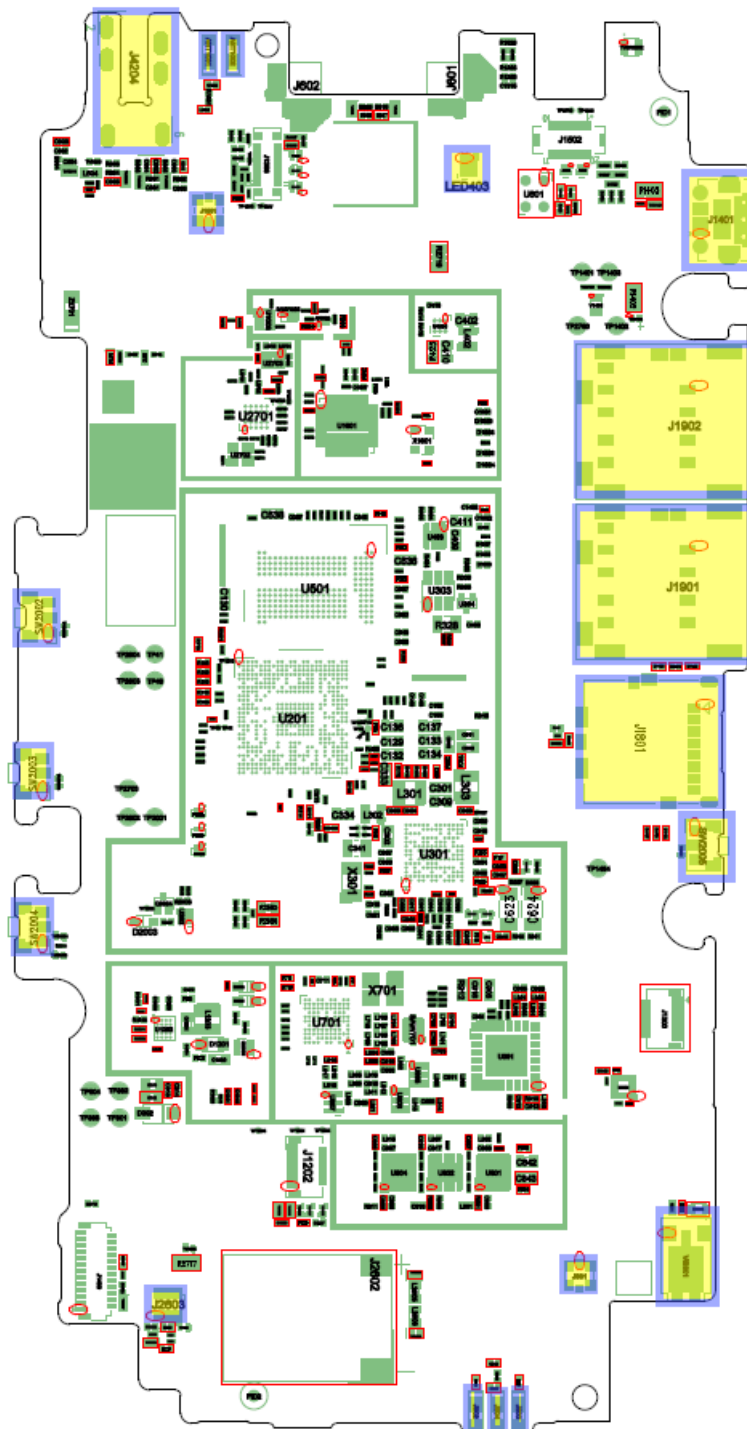
⇒1 (2,3,4, etc.) = Proceed to 'Additional Repair Info' for further instructions in the indicated section(s).

Position	Component	Part no.	Comments
ANT1001	Spring Connector Antenna	A/314-0000-00229	P HA+BH ⇨1
ANT1002	Spring Connector Antenna	A/314-0000-00229	P HA+BH ⇨1
J901	Connector Coax Receptacle 1p test switch	A/314-0000-00282	P HA+BH ⇨2
J902	Spring Connector Antenna	A/314-0000-00229	P HA+BH ⇨3
J903	Spring Connector Antenna	A/314-0000-00229	P HA+BH ⇨3
J904	Spring Connector Antenna	A/314-0000-00229	P HA+BH ⇨3
J1001	Connector Coax Receptacle 1p test switch	A/314-0000-00282	P HA+BH ⇨4
J1401	USB Connector	A/314-0000-00935	P HA+BH or BGA ⇨5
J1801	SD Connector	A/314-0000-00919	P HA+BH or BGA ⇨6
J1901	SIM Connector	A/314-0000-00923	P HA+BH or BGA ⇨7
J1902	SIM Connector	A/314-0000-00923	P HA+BH or BGA ⇨8
J2603	Battery Connector	A/314-0000-00884	P HA+BH ⇨9
J4204	Audio Connector	A/314-0000-00916	P HA+BH ⇨10
LED403	Flash LED	A/309-0000-00270	P HA+BH ⇨11
SW2002	Input switch	A/315-0000-00086	P HA+BH ⇨12
SW2003	Input switch	A/315-0000-00086	P HA+BH ⇨13
SW2004	Input switch	A/315-0000-00086	P HA+BH ⇨14
SW2005	switch	A/315-0000-00085	P HA+BH ⇨15
U602	Microphone	A/312-0000-00046	S HA+BH ⇨16
VIB301	Vibrator	A/320-0000-00079	P HA+BH ⇨17

Note: J1901 only in E2115 and E2124

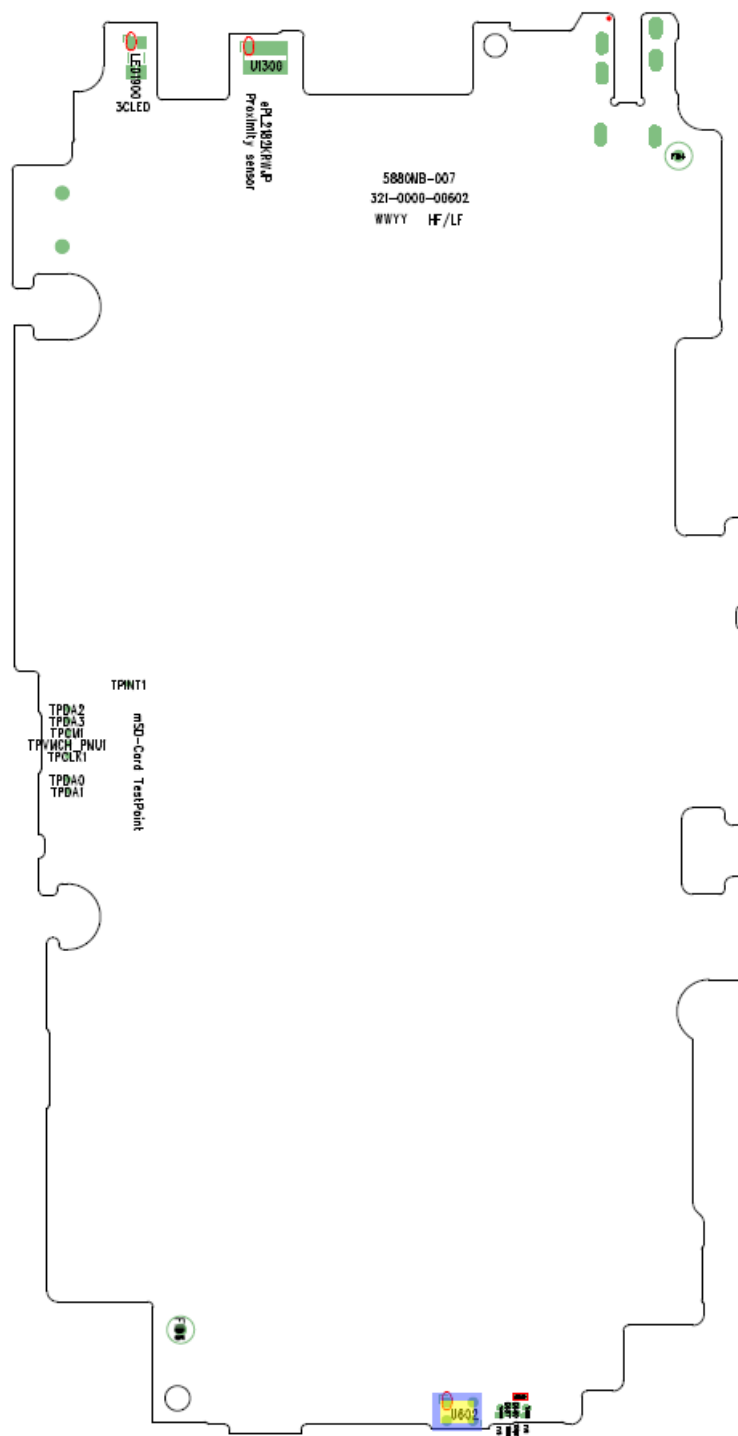
2 Component Placing

To access the Component Placing document, double-click the icon below.
Applicable for on-screen viewing only – icon not shown on hard-copies.



Primary side

SONY



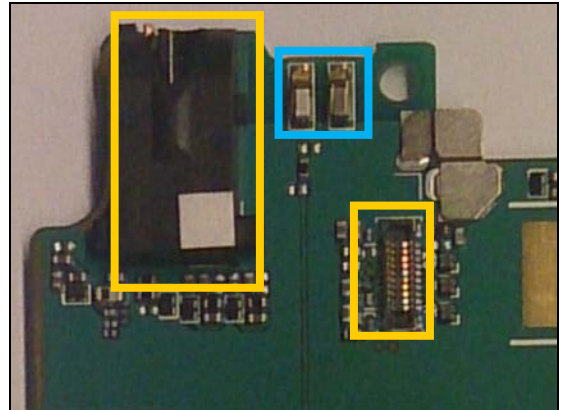
Secondary side

3 Additional Repair info

1

ANT1001, ANT1002

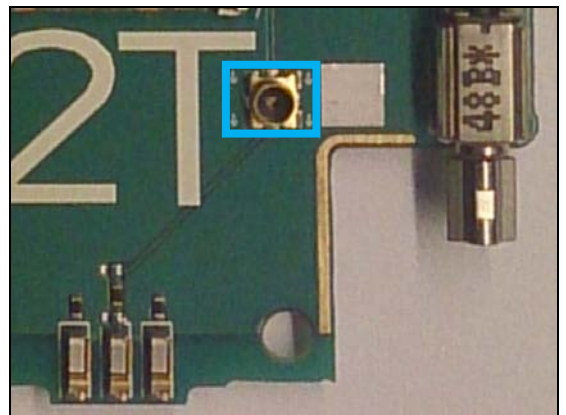
*Replace if mechanical damaged. (No or bad GPS)
Protect the BtB and Audio jack connectors with capton tape!*



2

J901

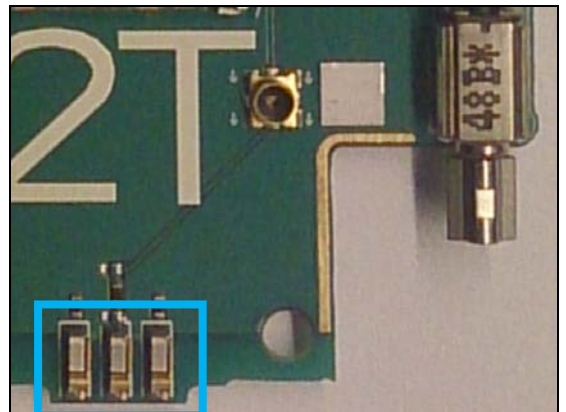
Replace if open circuit 1-2 (No or bad network, main antenna)



3

J902, J903, J904

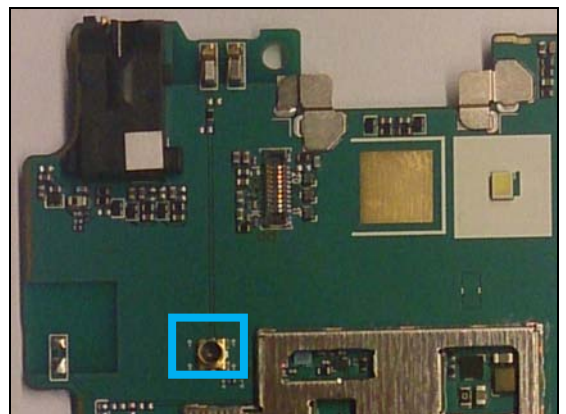
Replace if mechanical damaged. (No or bad network, main antenna)



4

J1001

Replace if open circuit 1-2 (No or bad GPS)

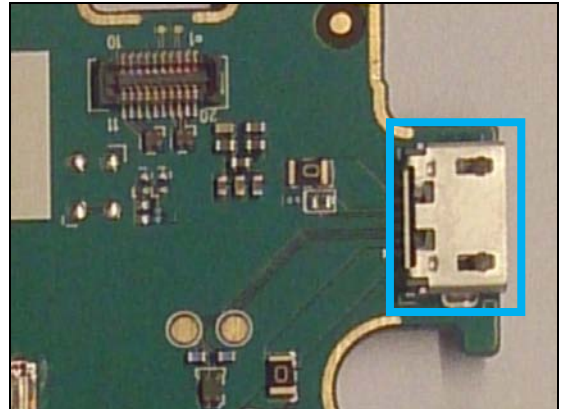


Repair Actions: Additional Repair Info

5

J1401

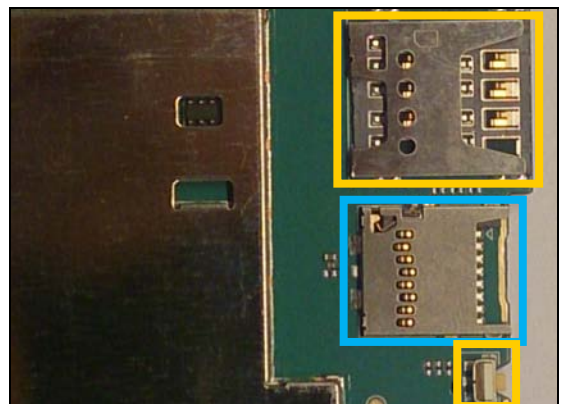
Replace if mechanical damaged (USB charger or data transfer not working)



6

J1801

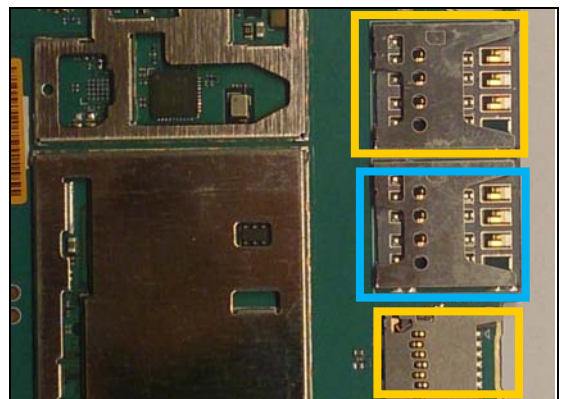
**Replace if mechanical damaged (No SD card)
Protect the SIM connector and Switch with capton tape!**



7

J1901

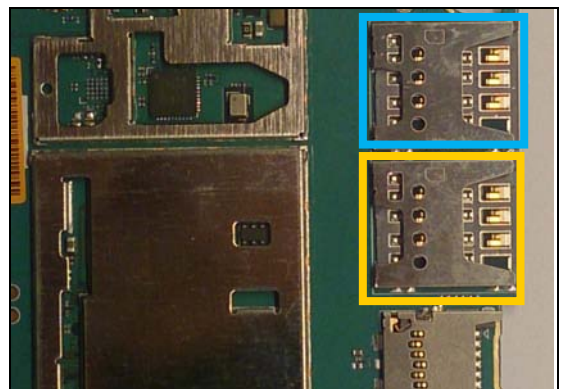
**Replace if mechanical damaged (No SIM 2 card)
Protect the SIM1 and SD card connectors with capton tape!**



8

J1902

**Replace if mechanical damaged (No SIM 1 card)
Protect the SIM 2 card connectors with capton tape!**



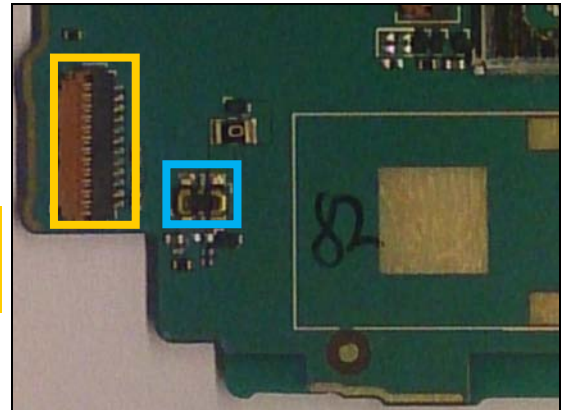
Repair Actions: Additional Repair Info

9

J2603

Replace if mechanical damaged (Phone dead or power off)

Protect the BtB connector with capton tape!

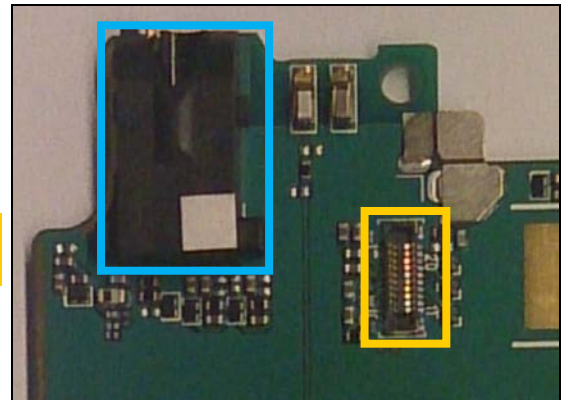


10

J4204

Replace if no audio from headset.

Protect the BtB connector with capton tape!

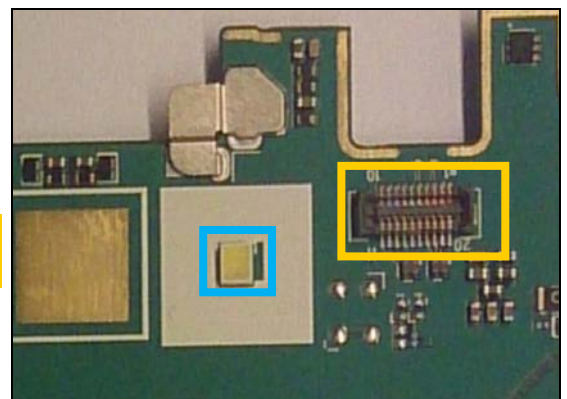


11

LED403

Replace if Flash LED not working

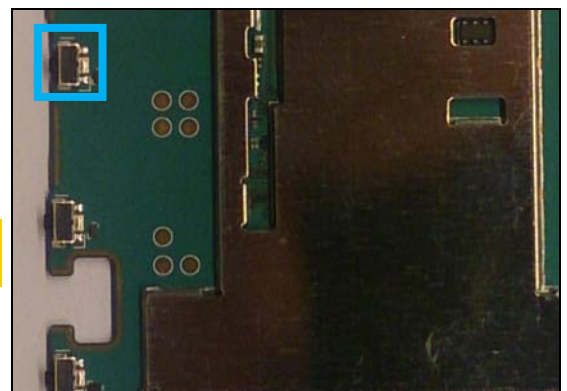
Protect the BtB connector with capton tape!



12

SW2002

Replace if mechanical damaged or open circuit when pushed (Power key problems)

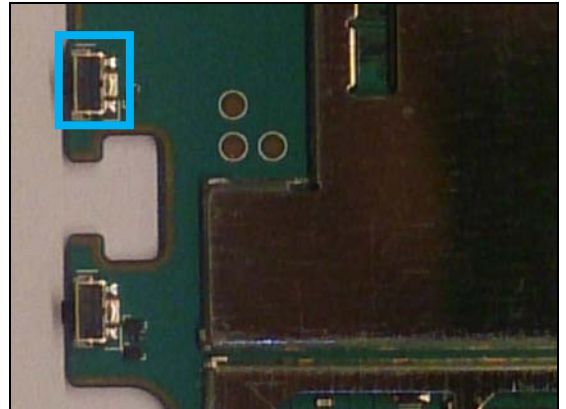


Repair Actions: Additional Repair Info

13

SW2003

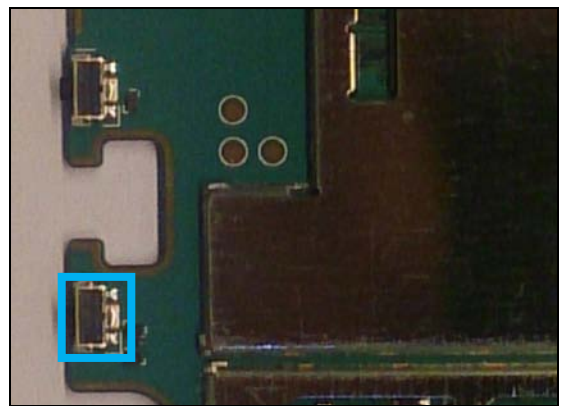
Replace if mechanical damaged or open circuit when pushed (Volume Up problem)



14

SW2004

Replace if mechanical damaged or open circuit when pushed (Volume Down problem)

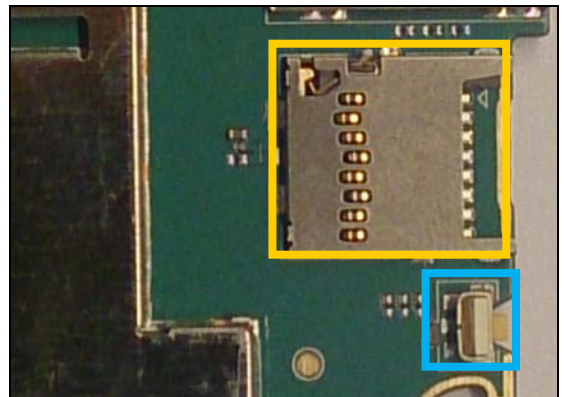


15

SW2005

Replace if mechanical damaged or open circuit when pushed (Reset Key problem)

Protect the SD card connector with capton tape!

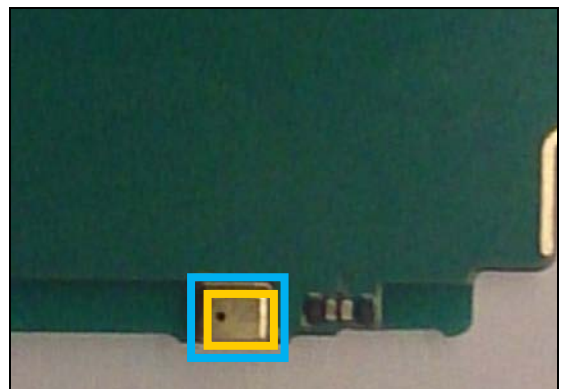


16

U602

Replace if no audio from main microphone.

When replacing protect microphone with capton tape!



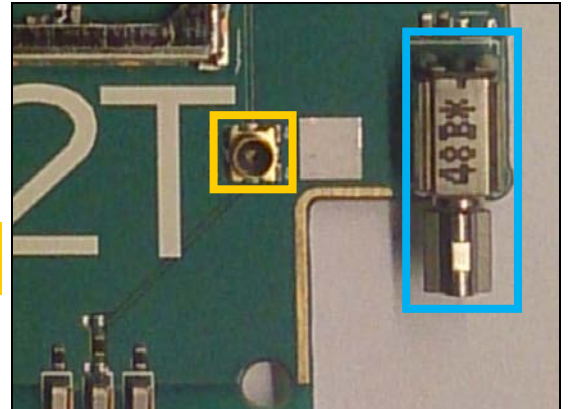
Repair Actions: Additional Repair Info

17

VIB301

Replace if no vibration from vibrator.

Protect the RF coax connector with capton tape!



4 Revision History

Rev.	Date	Changes / Comments
1	2015-02-10	Initial release